

662820 "SEE" 5950

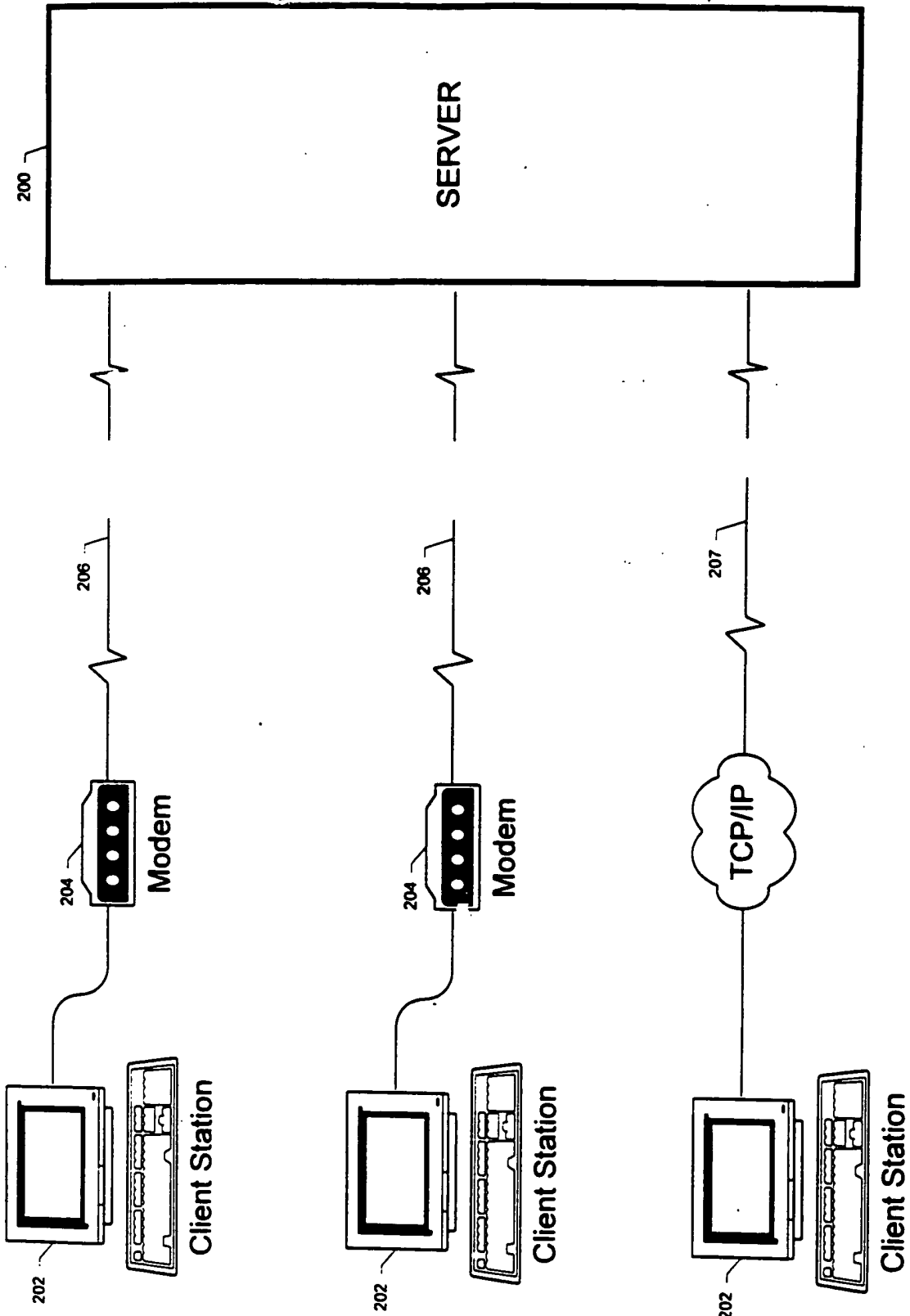


Fig. 2
(PRIOR ART)

66666" 55555555

300

SIO - Ship Operations and Marine Technical Support - Microsoft Internet Explorer provided by America ...

http://sio.ucsd.edu/supp_groups/shipskd/index.html

SHIP OPERATIONS
and Marine Technical Support
Scipes Institution of
Oceanography, UCSD

SHIP DESCRIPTIONS, PHOTOS, DECK PLANS, HANDBOOKS

- R/V Roger Revelle
- R/V New Horizon
- R/V Melville
- R/V Robert Gordon Sproull
- R/P FLIP
- Ship Handbooks

GENERAL INFORMATION

- Shipboard Technical Support
- Nimitz Marine Facility

SHIP SCHEDULING

- Schedules
- Forms
- Key Contacts
- General Info/News

[Revelle] [Melville] [New Horizon] [Sproull] [FLIP] [Ship Handbooks]
[STS] [Marine Facility]
[Schedules] [Forms] [Contacts] [General Info/News]

Other important ship-related links: [OCEANIC] [UNOLS]

Return to
SCRIPPS
INSTITUTION OF OCEANOGRAPHY

302

304

304

304

306

Fig. 3

504
500
502
512
514

506
AOLTY

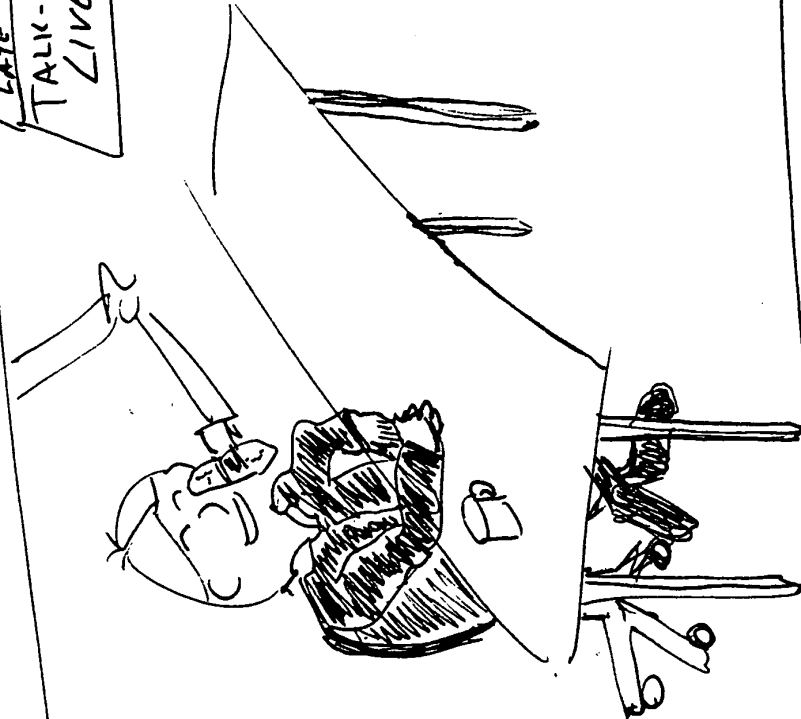


510
NITE-OWL CHATROOM

512
SOMNORX[®]
TAKE TWO &
SLEEP LIKE
THE DEAD. (A) (B)

514
FOX
"REALLY LATE
CAR CHASES"
@ 2:30AM

504
LATE NIGHT
TALK-AT-YOU
LIVE!



516
INVESTING FOR RETIREMENT: IT'S LATER THAN YOU THINK!
UPPER PENINSULA OF MICHIGAN TO SECEDE ----
CLINTON PONDER'S PREDICAMENT
SUPREME COURT RULES PATENT LAW UNCONSTITUTIONAL

Fig. 5


0035735 000300

610 600

AOLTV

News
Morning News
 Magazines
 The Wire
 Guide

Vienna, Virginia


 **73°**
 75°/58°

Wind: NE @ 10 mph
 Humidity: 73%

ABC Video Source

abc daytime
GENERAL HOSPITAL
 @ 1:00 AM

Texas Governor Talks of White House-
 Diane Sawyer interviews Texas governor
 and GOP presidential hopeful
 George W. Bush.

GOOD MORNING america 

All Headlines
 World/National
 Business

Hillary Clinton edges closer to a
 run for New York Senate seat.

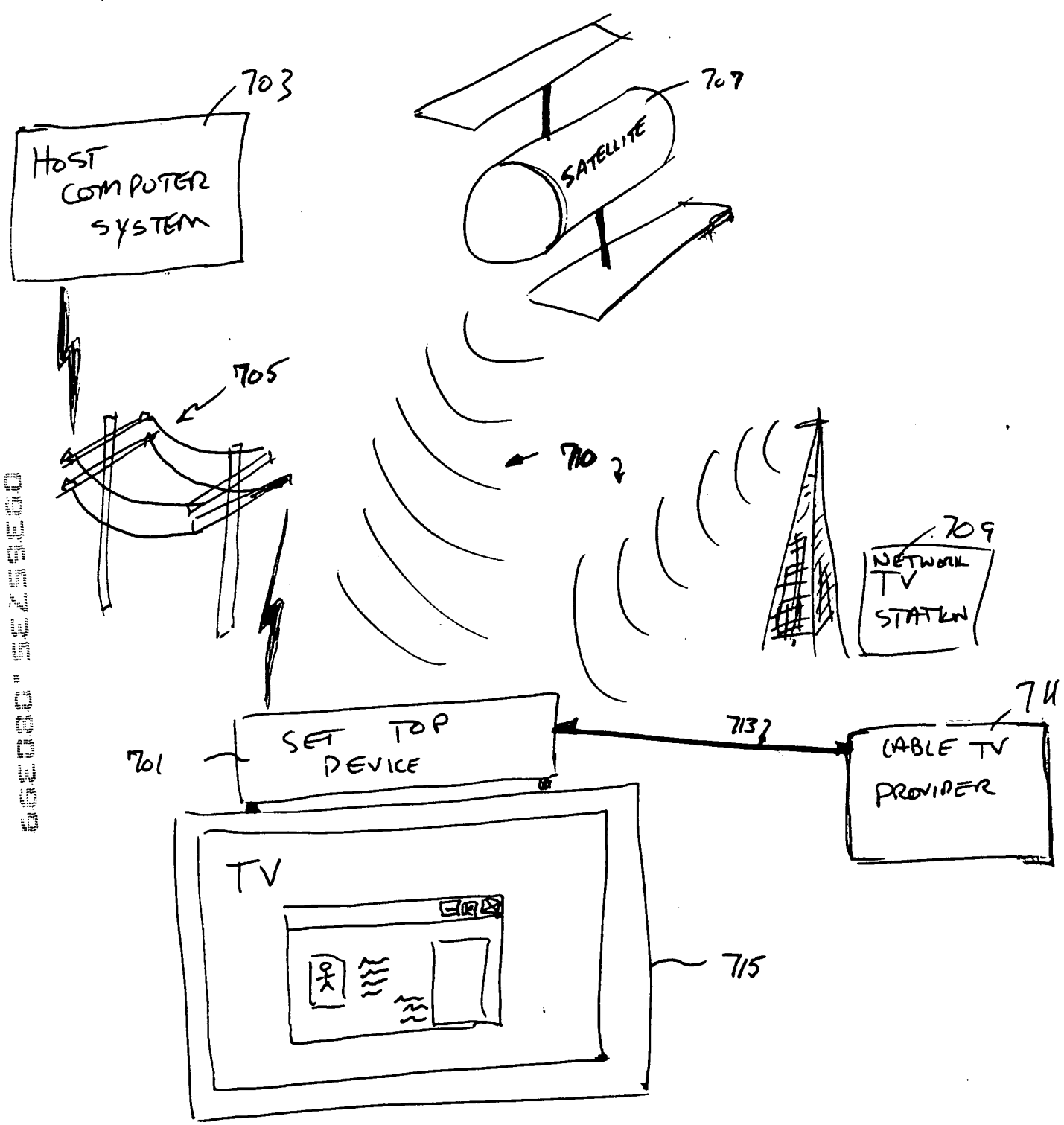
ABC Video Source

602

604

606

Fig. 5A



66680" 323350

Fig. 7

START

DETERMINE LOCAL CONTEXT 800

RETRIEVE CONTEXT-RELATED INFORMATION 802

CUSTOMIZE CONTENT PAGE 804

DISPLAY CUSTOMIZED PAGE TO VIEWER 806

END

800 802 804 806

Fig. 8

66250 50330

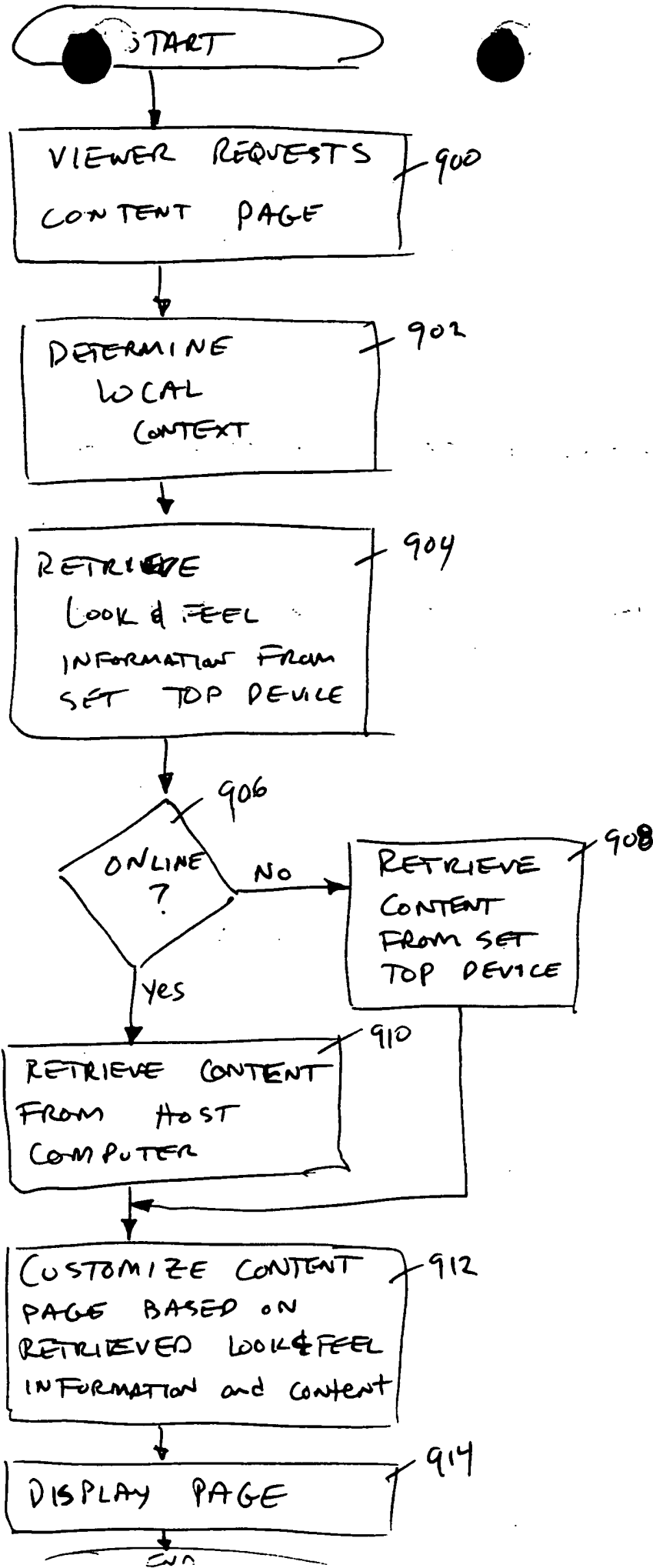


Fig. 9